

# WP<sup>®</sup> SUPERGRIT<sup>®</sup> SAFETY TREADS

## SUPERGRIT<sup>®</sup> TREADS PROVIDE:

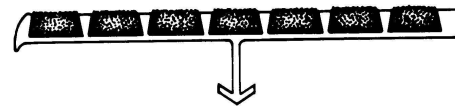
A heat-treated, corrosion resistant, extruded aluminum base with satin lacquered finish. The use of diamond hard aluminum oxide in the filler assures long tread life under heavy pedestrian traffic use. Supergrit<sup>®</sup> is appropriate for both inside and outside use.

## SUPERGRIT<sup>®</sup> FEATURES:

- Extruded aluminum base - abrasive filler.
- Lengths to order - up to 120" max.
- High content of aluminum oxide abrasive
- 11 standard colors - Colors extend throughout filler
- Non combustible
- Protective tape available

## SUPERGRIT<sup>®</sup> SPECIFICATION:

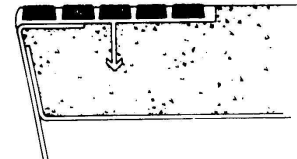
- Provide Supergrit<sup>®</sup> type **241BF** safety nosings as manufactured by Wooster Products Inc for interior and exterior stairs.
- Nosing base shall be type 6063-T5 extruded aluminum.
- Anti-slip filler shall contain not less than 65% virgin grain Aluminum Oxide/Silicon Carbide abrasive.
- Nosings shall be noncombustible as tested under Federal Test Method Standard No. 501a. Method 6411
- Type of anchor shall be specified.
- Nosings shall terminate not more than 4" from ends of steps for poured concrete stairs; for concrete filled steel pan stairs, nosings shall be full length of steps less 1/8" clearance.
- Color shall extend uniformly throughout the filler; black color will be furnished if no other color is specified.
- Nosings shall finish flush with the top of the traffic surface.



**Type 241BF**  
4" wide, 1/4" thick  
DRAWING NOT TO SCALE

This series is designed to meet the OSHA requirements of the barrier-free code for stair construction.

Note: Nose design provides better fit at formed edge of steel pan.



Detail - Sure hold anchor in concrete step

## GUIDELINES FOR THE INSTALLATION OF METAL SAFETY TREADS OR NOSINGS INTO NEW CONCRETE OR STEEL PAN FILLED STAIRS:

The use of very large aggregate in the concrete mix may make placement of the safety nosing difficult. Safety nosing placement may be difficult in concrete with very low slump. Place concrete into the stair forms or steel pans as quickly as possible; schedule pours so as to install the metal safety nosings quickly before initial set of concrete occurs. Puddle the concrete, tamp the safety nosing to insure proper concrete formation around the anchors. Remove protective tape (if used) as soon as practical. Order nosings or treads well in advance of the pour or installation date. Close stairway after pour; permit no use for 24 hours.

**WOOSTER PRODUCTS INC, 1000 SPRUCE ST., WOOSTER, OH 44691**

**Toll Free: 800-321-4936**

**Phone: 330-264-2844**

**Fax: 330-262-4151**

**Web Site: <http://www.wooster-products.com>**

**E-mail: [sales@wooster-products.com](mailto:sales@wooster-products.com)**